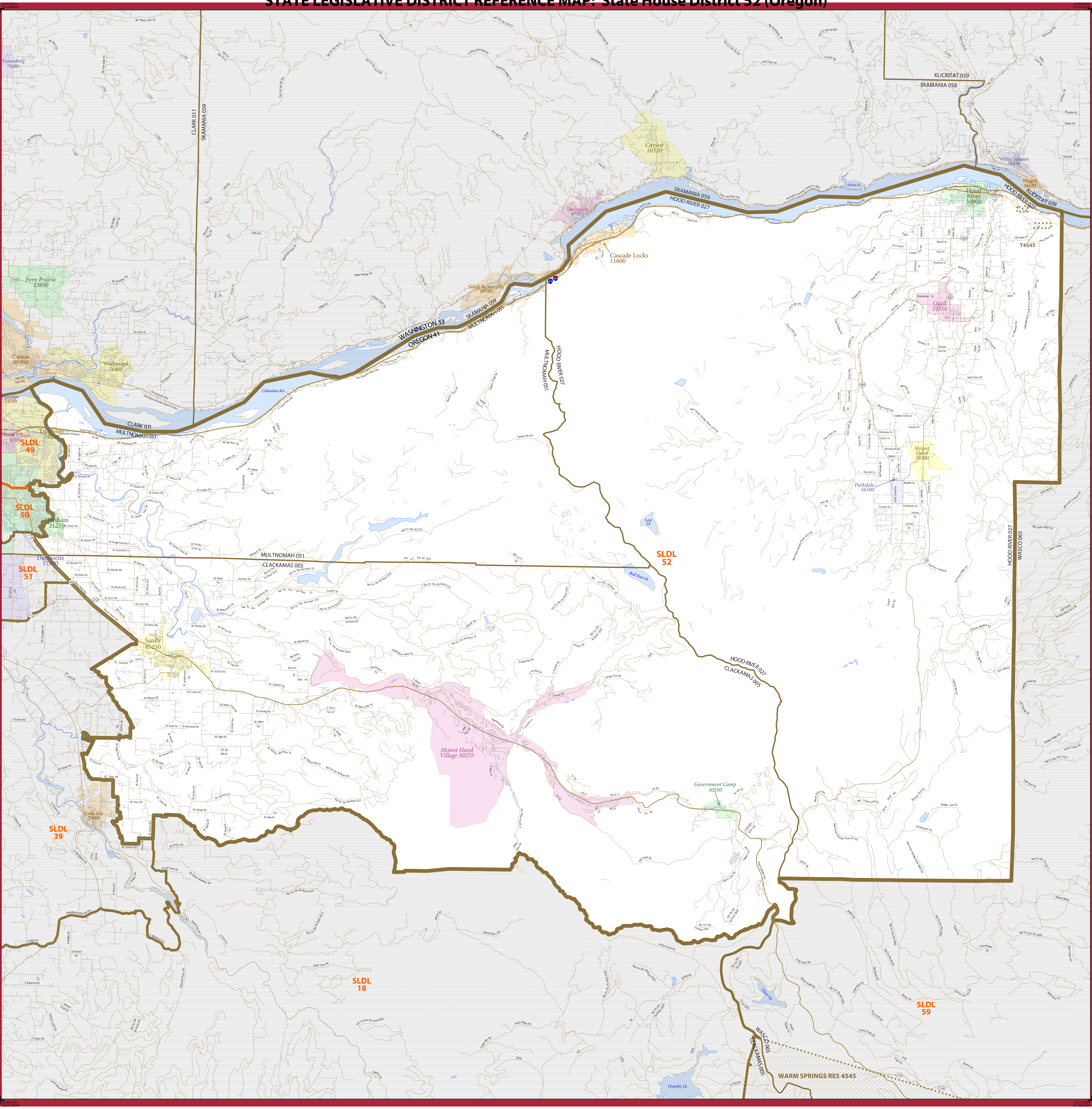











STATE LEGISLATIVE DISTRICT REFERENCE MAP: State House District 52 (Oregon)



LEGEND	
<u>SYMBOL DESCRIPTION</u>	<u>LABEL STYLE</u>
International	CANADA
Federal American Indian Reservation	L'ANSE RES 1880
Off-Reservation Trust Land	T1880
State American Indian Reservation	Tama Res 9400
State Legislative District - Lower (House)	SLD 94
County (or statistically equivalent entity)	NEW YORK 36
County (or statistically equivalent entity)	ERIE 029
Minor Civil Division (MCD) ¹	Bristol town 07485
Consolidated City	MILFORD 47500
Incorporated Place ²	Davis 18100
Census Designated Place (CDP) ²	Incline Village 35100

DESCRIPTION	SYMBOL	DESCRIPTION	SYMBOL
Interstate		Water Body	
U.S. Highway		Outside Subject Area	
State Highway			
Other Road			
Railroad			

Where international, state, county, and/or MCD boundaries coincide, the map shows the boundary symbol for only the highest-ranking of these boundaries.

1 MCD boundaries are shown in the following states in which some or all MCDs function as general-purpose governmental units: Connecticut, Illinois, Indiana, Kansas, Maine, Massachusetts, Michigan, Minnesota, Missouri, Nebraska, New Hampshire, New Jersey, New York, North Dakota, Ohio, Pennsylvania, Rhode Island, South Dakota, Vermont, and Wisconsin. (Note that Illinois and Nebraska have some counties covered by nongovernmental precincts and Missouri has most counties covered by

2 Place label color corresponds to the place fill color.
Label colors: Davis Davis Davis Davis Davis

OFF-RESERVATION TRUST LAND NAMES

T4545 Warm Springs

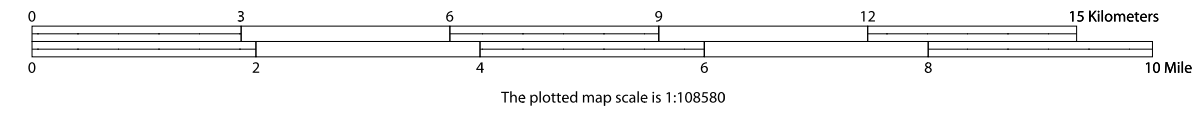
State legislative districts are delineated based on the results from the 2010 Decennial Census; all other legal boundaries and names are as of January 1, 2010. The boundaries shown on this map are for Census Bureau statistical data collection and tabulation purposes only; their depiction and designation for statistical purposes does not constitute a determination of jurisdictional authority or rights of ownership or entitlement.

Geographic Vintage: 2010 Census (reference date: January 1, 2010)

Data Source: U.S. Census Bureau's MAZ/IGER database (BAS13)
Map Created by Geography Division: May 19, 2013

U.S. DEPARTMENT OF COMMERCE Economics and Statistics Administration U.S. Census Bureau

Projection: Albers Equal Area Conic
Datum: NAD 83
Spheroid: GRS 80
1st Standard Parallel: 42 42 46
2nd Standard Parallel: 45 34 55
Central Meridian: -120 34 56
Latitude of Projection's Origin: 41 59 44
False Easting: 0
False Northing: 0



PARENT SHEET 1

Total Sheets: 1

- Index Sheets: 0

- Parent Sheets: 1

NAME: State House District 52

ENTITY TYPE: State Legislative District - Lower (House

ENTITY CODE: C

COU: Clackamas (005), Hood River (027), Multnomah (051)

SLDL REF MAP (PARENT)
235041052001